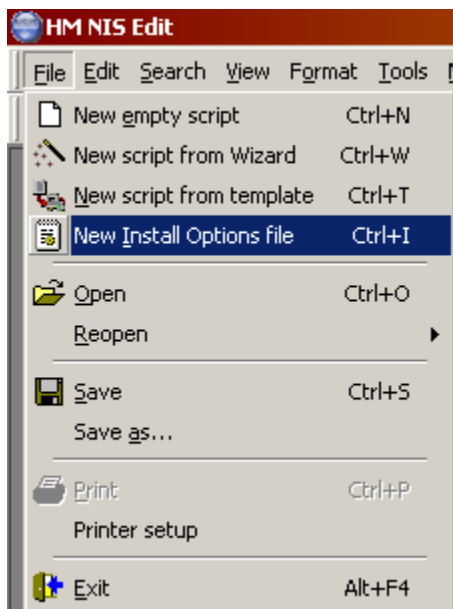
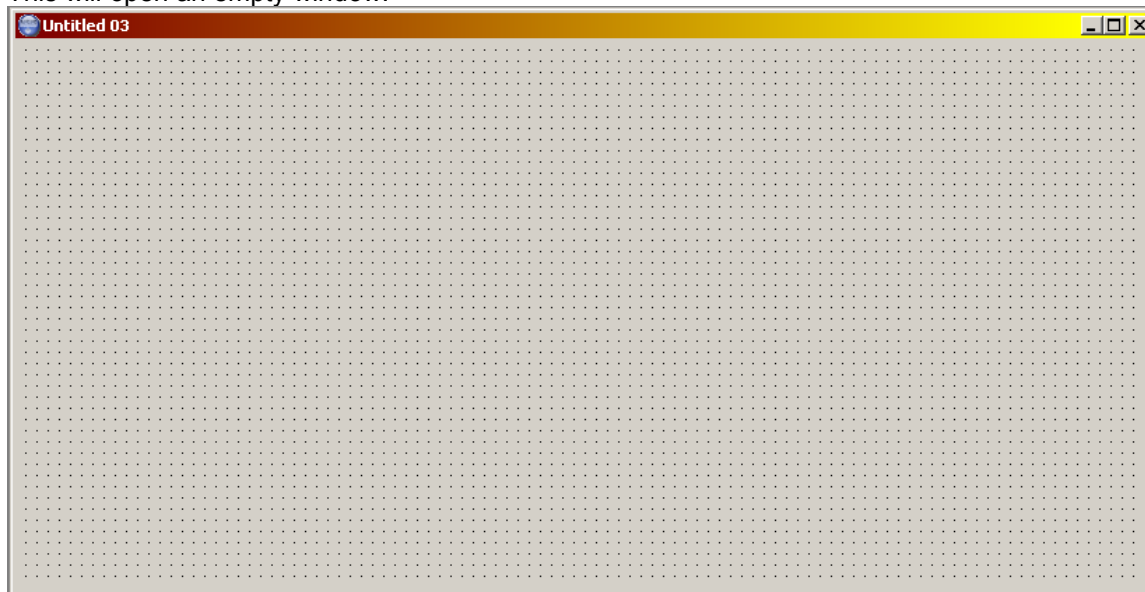


Select a “New Install Options file”

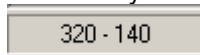


This will open an empty window.

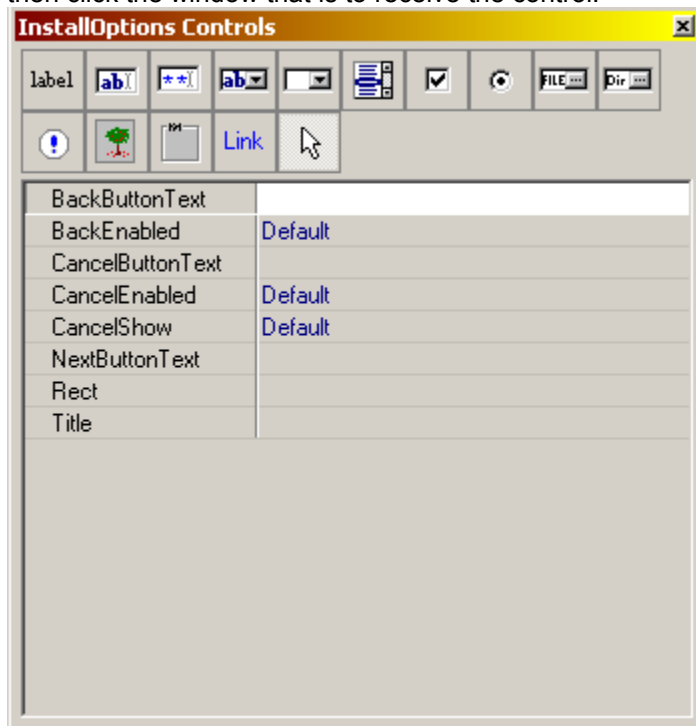


At this point I like to resize it to 320 by 140. This is the size the window will be when NSIS opens it.

Use the “xy” window size in the lower left corner to view the size of the window.



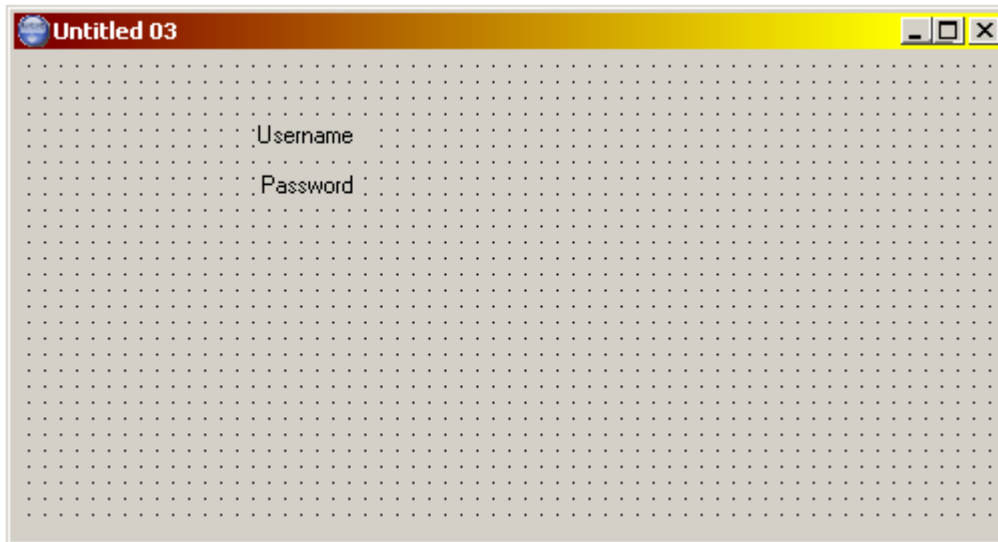
Use the “InstallOptions Controls” window to place controls on the new window. Click the desired control, then click the window that is to receive the control.



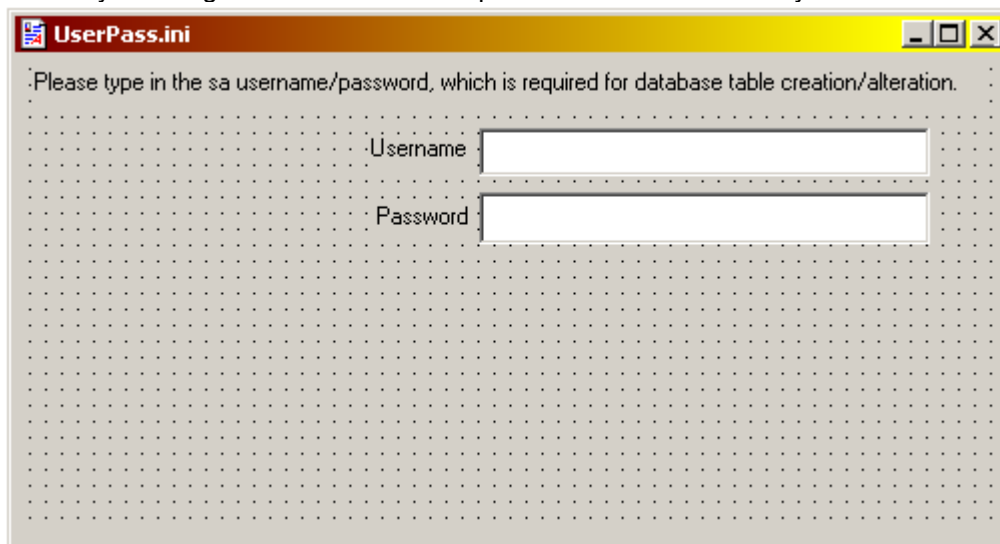
Here a label is placed on the window.



Additional label placed on the window and the text changed to be more descriptive.



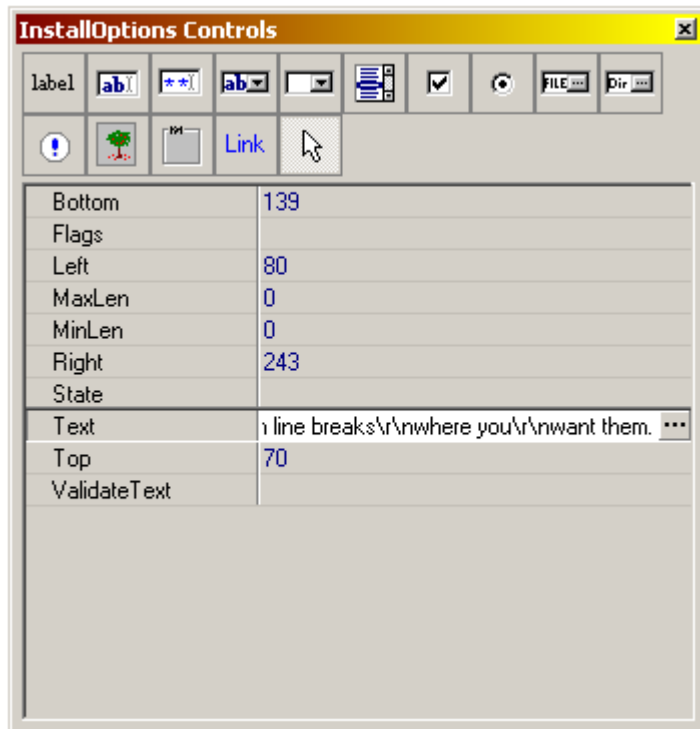
Now add a Text field and a Password field from the "InstallOptions Controls" window. Size and position them to your liking. There is also a label placed above the data entry fields.



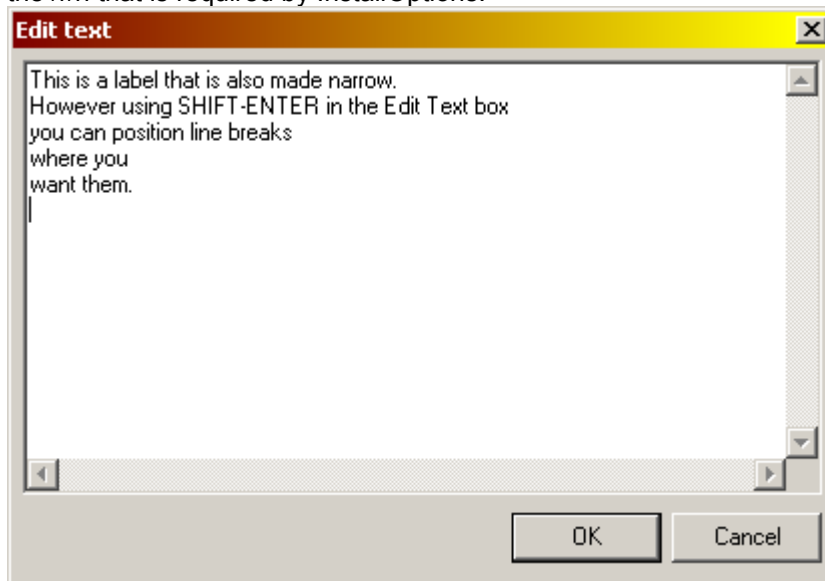
The controls can be positioned in several ways:

- Using the mouse to move/resize the control.
- Entering the control coordinates in the "InstallOptions Controls" window.
Top, Left, Right, and Bottom.
- Selecting a control and using the cursor keys for fine movement/sizing.
CTRL-arrow to position.
SHIFT-arrow to resize.

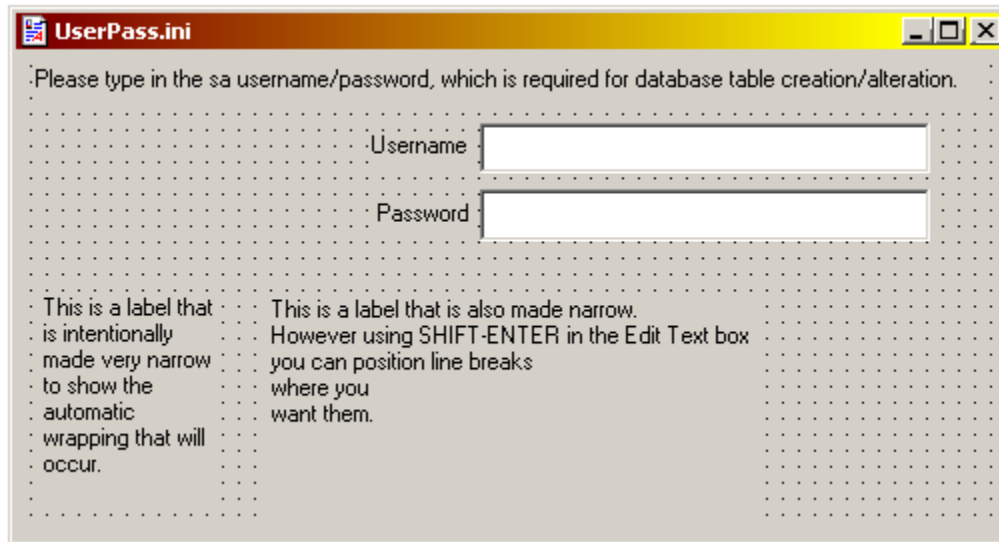
By clicking on the ellipse button in the Text field a dialog box will open allow you to enter a large amount of text.



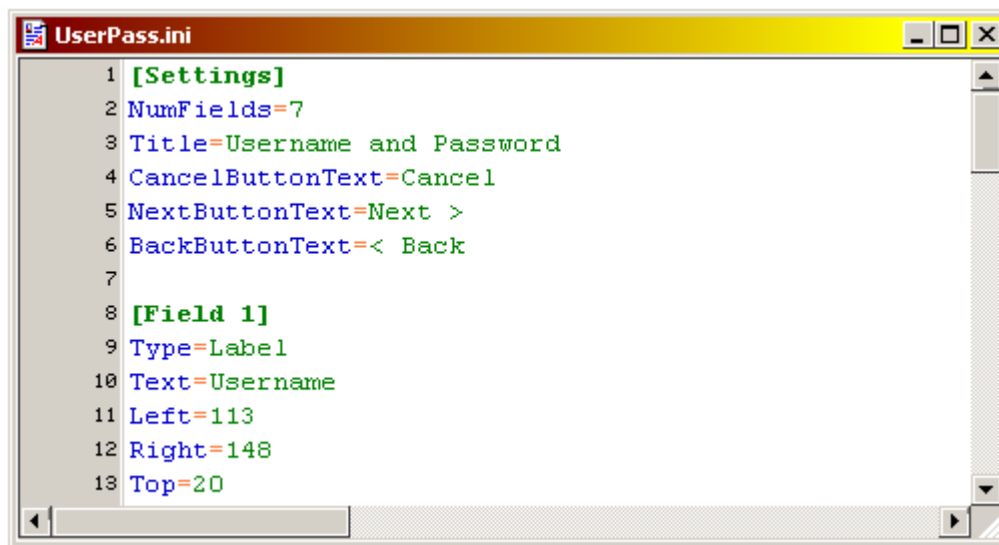
Pressing SHIFT-ENTER allows you to enter manual line breaks. The SHIFT-ENTER will be translated to the `\r\n` that is required by InstallOptions.



This is the result of using automatic and manual line breaks.



Pressing F12 will show the actual INI file that will be generated.



At this point, do a Save. An INI file will be saved to the specified directory.

Now you should note the Field numbers of the data entry controls. We are interested in

Username (Text – Field 2)
Password (Password – Field 4)

```
[Field 2]
Type=Text
Left=150
Right=300
Top=20
Bottom=35
```

```
[Field 4]
Type=Password
Left=150
Right=300
Top=40
Bottom=56
```

This example is using the Modern User Interface.

In your `.onInit` callback function, specify the INI filename and its alias. This is because I keep my INI files, graphics, etc in a sub-directory.

```
!insertmacro MUI_INSTALLOPTIONS_EXTRACT_AS "assets\UserPass.ini" "UserPass"
```

In your NSI script where you set up the page order:

```
LangString USERPASS_TITLE ${LANG_ENGLISH} "Enter your Username and Password."
LangString USERPASS_SUBTITLE ${LANG_ENGLISH} " "
Page custom UsernamePasswordPage
```

The custom page function:

```
# CUSTOM PAGE.
# =====
# Get the Username and Password.
Function UsernamePasswordPage

    !insertmacro MUI_HEADER_TEXT "$(USERPASS_TITLE)" "$(USERPASS_SUBTITLE)"

    # Display the page.
    !insertmacro MUI_INSTALLOPTIONS_DISPLAY "UserPass"

    # Get the user entered values.
    !insertmacro MUI_INSTALLOPTIONS_READ $Username "UserPass" "Field 2" "State"
    !insertmacro MUI_INSTALLOPTIONS_READ $Password "UserPass" "Field 4" "State"

FunctionEnd
```

The VARs `$Username` and `$Password` will contain the user entered values.